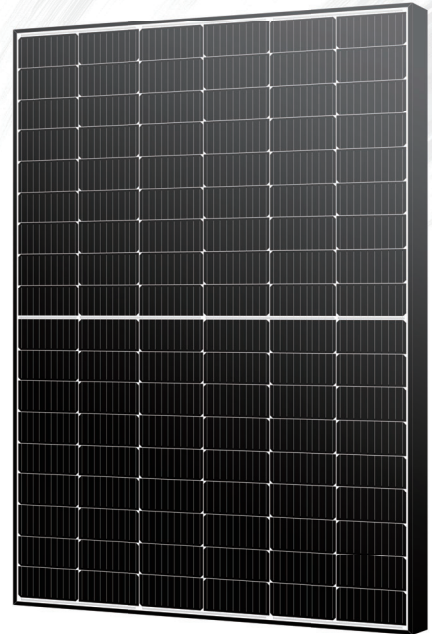
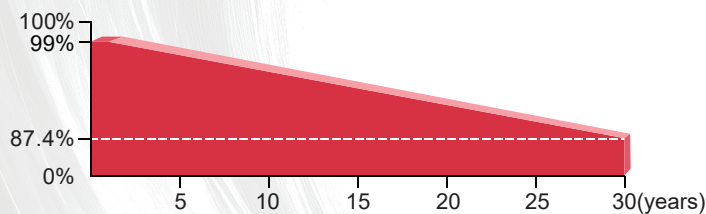


# N-Type

# MORE ENERGY

More Energy, More Power

## 435W MBB Bifacial Double Glass Mono Half-cell Module M10-108GANT 415~435W



### More Energy's linear performance warranty

12 Years Product Warranty on Materials and Workmanship

30 Years Linear Performance Warranty

0.40% Subsequent Annual Degradation



- ▲ Higher output power
- ▲ Module efficiency up to 22.28%
- ▲ Lower temperature coefficient
- ▲ Up to 30% additional power gain from back side depending on albedo



- ▲ ISO9001:2015 Quality Management system
- ▲ ISO14001:2015 Environmental Management System
- ▲ ISO45001:2018 Occupational Health and Safety Management System



- ▲ Lower LCOE (Levelized Cost Of Energy)
- ▲ High Power output lead to lower BOS cost



Excellent Potential Induced Degradation Resistance



- ▲ Salt Mist Corrosion Protect
- ▲ Ammonia Resistance



Excellent Wind Load 2400Pa&Snow Load 5400Pa Under Certain Installation Method

Hotline&WhatsApp: + 49 15 225 20 30 30

Web: [www.more-energy.net](http://www.more-energy.net)

E-Mail: [info@more-energy.net](mailto:info@more-energy.net)

Add: Fürtherstr. 38, 90429 Nürnberg, Germany



# ME415~435M10-108GANT

## Electrical Characteristics(STC\*)

Power Output(Wp)	415	420	425	430	435
Max Power Tolerance(W)	0-5	0-5	0-5	0-5	0-5
Module Efficiency(%)	21.25	21.51	21.76	22.02	22.28
Voltage Mpp-Vmpp(V)	31.44	31.63	31.81	31.99	32.17
Current Mpp-Imp(A)	13.20	13.28	13.36	13.44	13.52
Voltage Open Circuit-Voc(V)	37.83	38.02	38.21	38.40	38.59
Short Circuit Current-Isc(A)	13.97	14.05	14.13	14.21	14.29

\*STC:Irradiance 1000 W/m<sup>2</sup>,Environment Temperature 25°C,Air Mass AM1.5

## Electrical Characteristics(NMOT\*)

Power Output(Wp)	314	318	322	326	329
Voltage Mpp-Vmpp(V)	29.57	29.75	29.93	30.07	30.16
Current Mpp-Imp(A)	10.62	10.69	10.76	10.84	10.91
Voltage Open Circuit-Voc(V)	35.97	36.16	36.35	36.54	36.73
Short Circuit Current-Isc(A)	11.24	11.31	11.37	11.43	11.49

\*NMOT:Irradiance 800 W/m<sup>2</sup>,Environment Temperature 20°C,Air Mass AM1.5

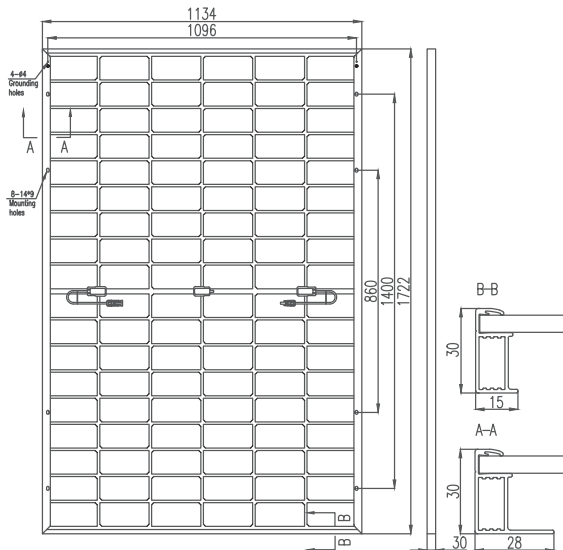
## Electrical Characteristics(NMOT\*)

Power Gain(%)	Power Output(Wp)	Voltage Mpp-Vmpp(V)	Current Mpp-Imp(A)	Voltage Open Circuit-Voc(V)	Short Circuit Current-Isc(A)
10	468	31.81	14.70	38.21	15.54
15	489	31.81	15.36	38.21	16.25
20	510	31.81	16.03	38.21	16.96
25	531	31.81	16.70	38.21	17.66
30	553	31.81	17.37	38.21	18.37

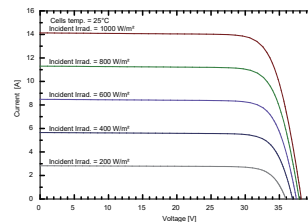
## Mechanical Data

Dimension Of Module	1722*1134*30mm
Weight(kg)	25
Front/Back Glass	2.0mm heat strengthened glass
Cables	4mm <sup>2</sup> /300mm or Customized Length
Junction Box	IP68,3 Bypass-Diode
Connector	MC4 compatible

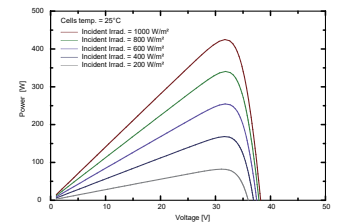
## Module Back View



## I-V Curves(425W)



## P-V Curves(425W)



## Mechanical Data

Loading Capacity	936 pcs/40'HQ
------------------	---------------

## Working Conditions

Max System Voltage(VDC)	1500V
Max Series Fuse Rating	30A
Maximum Load Capacity	Snow 5400Pa/Wind 2400Pa
Operating Temperature	-40 C ~+85 C
Safety Class	II
Power Bifaciality	70±5%

## Working Conditions

Temperature Coefficients of Isc(%/C)	0.046
Temperature Coefficients of Voc(%/C)	-0.26
Temperature Coefficients of Pmpp(%/C)	-0.310
NMOT	45±2 C